



GAP1-InsP4 BP Polyclonal Antibody

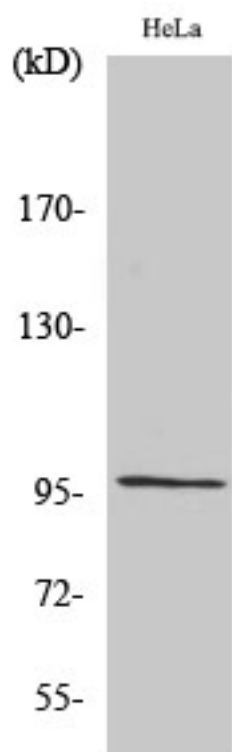
Catalog No	YP-Ab-14753
Isotype	IgG
Reactivity	Human;Mouse;Rat
Applications	WB;ELISA
Gene Name	RASA3
Protein Name	Ras GTPase-activating protein 3
Immunogen	The antiserum was produced against synthesized peptide derived from human RASA3. AA range:247-296
Specificity	GAP1-InsP4 BP Polyclonal Antibody detects endogenous levels of GAP1-InsP4 BP protein.
Formulation	Liquid in PBS containing 50% glycerol, 0.5% BSA and 0.02% sodium azide.
Source	Polyclonal, Rabbit,IgG
Purification	The antibody was affinity-purified from rabbit antiserum by affinity-chromatography using epitope-specific immunogen.
Dilution	Western Blot: 1/500 - 1/2000. ELISA: 1/40000. Not yet tested in other applications.
Concentration	1 mg/ml
Purity	≥90%
Storage Stability	-20°C/1 year
Synonyms	RASA3; Ras GTPase-activating protein 3; GAP1(IP4BP); Ins P4-binding protein
Observed Band	95kD
Cell Pathway	Cell membrane.
Tissue Specificity	Blood,Brain,Peripheral blood,Platelet,Testis,
Function	function:Inhibitory regulator of the Ras-cyclic AMP pathway. Binds inositol tetrakisphosphate (IP4) with high affinity. Might be a specific IP4 receptor.,similarity:Contains 1 Btk-type zinc finger.,similarity:Contains 1 PH domain.,similarity:Contains 1 Ras-GAP domain.,similarity:Contains 2 C2 domains.,
Background	This gene encodes a protein that binds inositol 1,3,4,5-tetrakisphosphate and stimulates the GTPase activity of Ras p21. This protein functions as a negative regulator of the Ras signalling pathway. It is localized to the cell membrane via a pleckstrin homology (PH) domain in the C-terminal region. Alternative splicing results in multiple transcript variants. [provided by RefSeq, Mar 2016],
matters needing attention	Avoid repeated freezing and thawing!



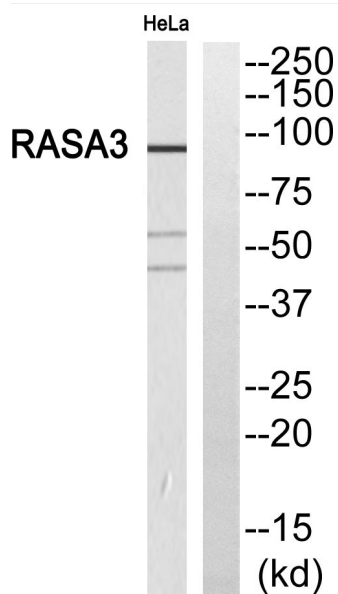
Usage suggestions

This product can be used in immunological reaction related experiments. For more information, please consult technical personnel.

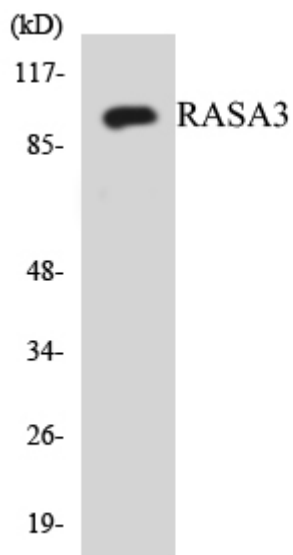
Products Images



Western Blot analysis of various cells using GAP1-InsP4 BP Polyclonal Antibody



Western blot analysis of RASA3 Antibody. The lane on the right is blocked with the RASA3 peptide.



Western blot analysis of the lysates from HUVECcells using RASA3 antibody.